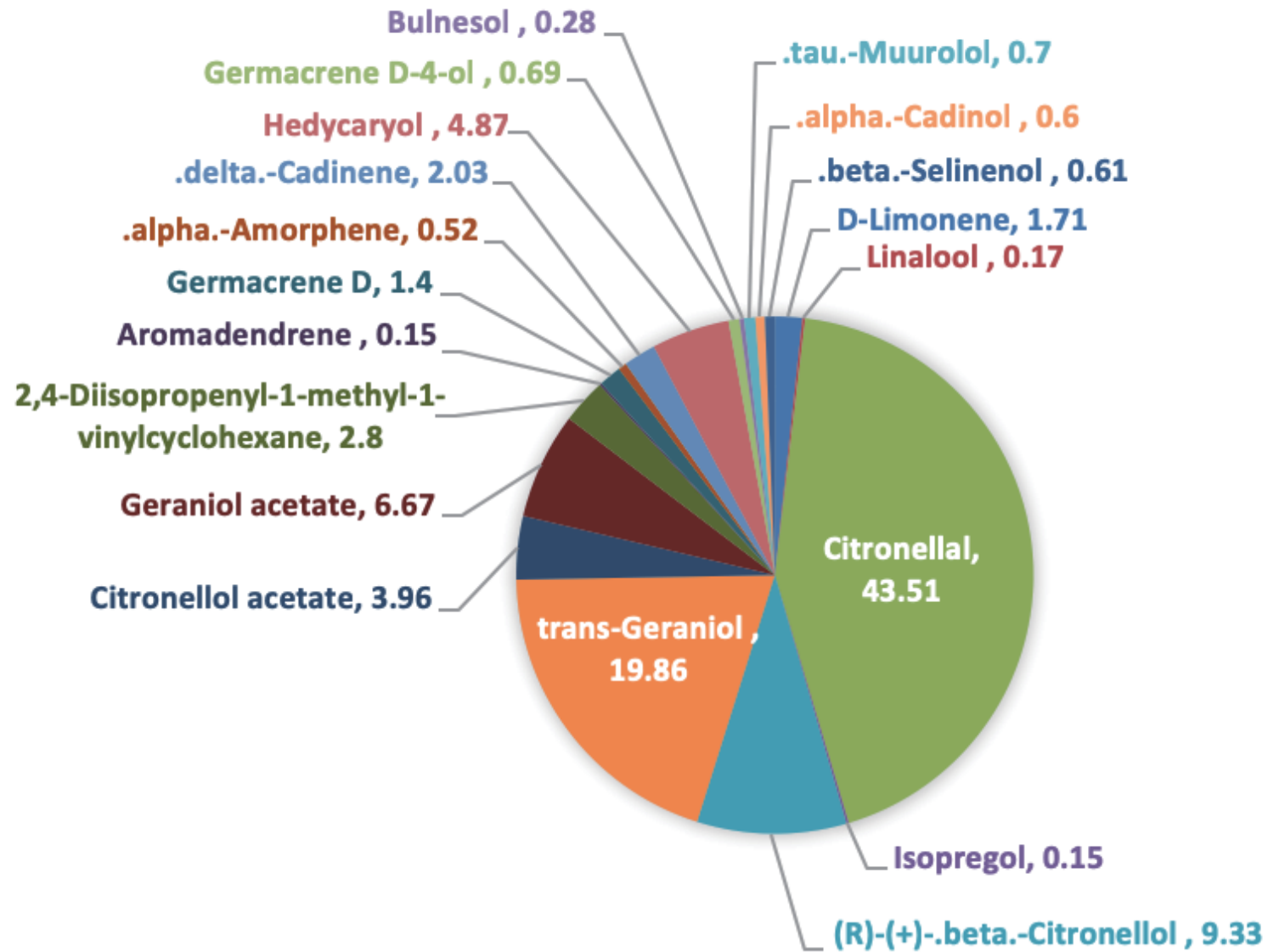
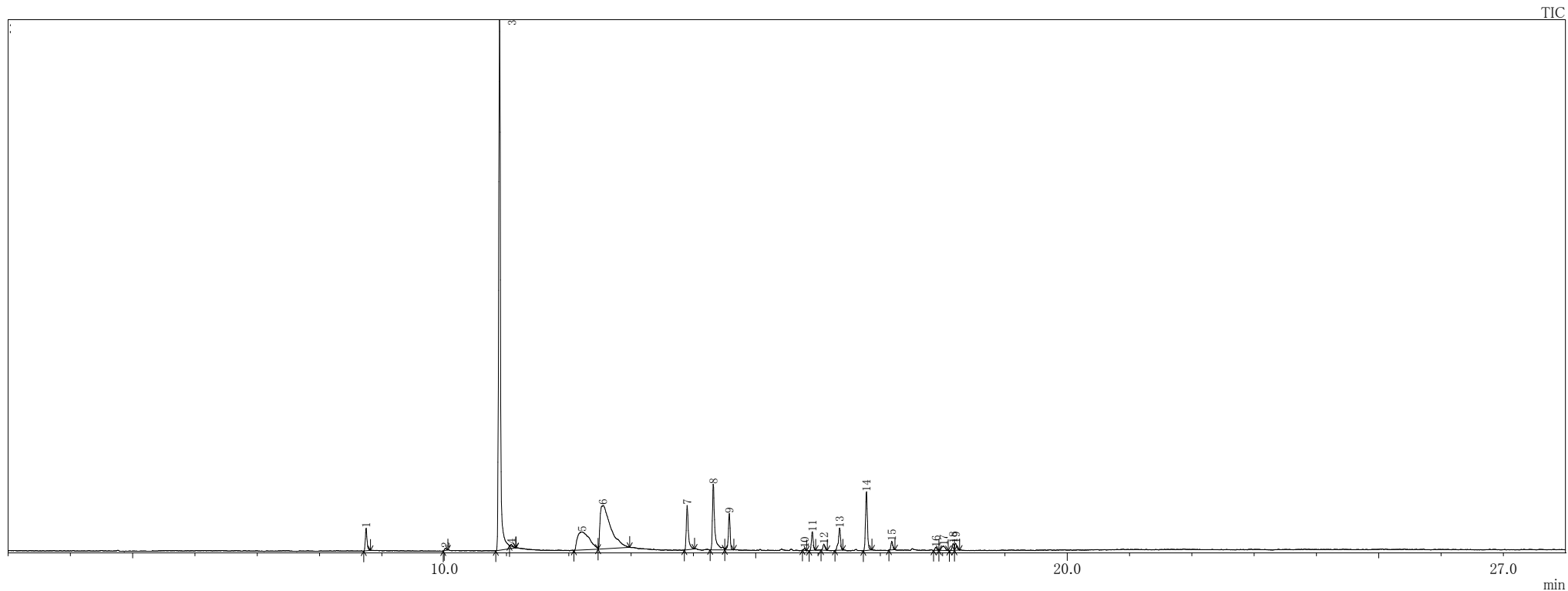


CITRONELLA



Citronella



ピークテーブル TIC

ピーク#	保持時間	面積	面積%	高さ	高さ%	A/H	化合物
1	8.748	254932	1.71	130659	2.51	1.95	D-Limonene
2	10.021	25657	0.17	11774	0.23	2.18	1,6-Octadien-3-ol, 3,7-dimethyl-
3	10.892	6494017	43.51	3066069	58.79	2.12	6-Octenal, 3,7-dimethyl-
4	11.076	22094	0.15	9783	0.19	2.26	Cyclohexanol, 5-methyl-2-(1-methylethenyl)-
5	12.213	1392790	9.33	104918	2.01	13.28	6-Octen-1-ol, 3,7-dimethyl-, (R)-
6	12.550	2964442	19.86	250872	4.81	11.82	2,6-Octadien-1-ol, 3,7-dimethyl-, (E)-
7	13.900	590862	3.96	256259	4.91	2.31	6-Octen-1-ol, 3,7-dimethyl-, acetate
8	14.321	996165	6.67	379857	7.28	2.62	2,6-Octadien-1-ol, 3,7-dimethyl-, acetate, (E)-
9	14.578	418199	2.80	210120	4.03	1.99	Cyclohexane, 1-ethenyl-1-methyl-2,4-bis(1-methylethenyl)-
10	15.785	21880	0.15	11959	0.23	1.83	Aromadendrene
11	15.909	209674	1.40	107477	2.06	1.95	1,6-Cyclodecadiene, 1-methyl-5-methylene-8-(1-methylethyl)-, [s-(E,E)]-
12	16.095	77213	0.52	35003	0.67	2.21	Naphthalene, 1,2,4a,5,6,8a-hexahydro-4,7-dimethyl-1-(1-methylethyl)-
13	16.348	302368	2.03	128681	2.47	2.35	Naphthalene, 1,2,3,4,4a,7-hexahydro-1,6-dimethyl-4-(1-methylethyl)-
14	16.779	726516	4.87	338948	6.50	2.14	3,7-Cyclodecadiene-1-methanol, .alpha.,.alpha.,4,8-tetramethyl-, [s-(Z,Z)]
15	17.185	102664	0.69	50550	0.97	2.03	1-Hydroxy-1,7-dimethyl-4-isopropyl-2,7-cyclodecadiene
16	17.891	41182	0.28	18507	0.35	2.23	5-Azulenemethanol, 1,2,3,4,5,6,7,8-octahydro-.alpha.,.alpha.,3,8-tetramethyl-
17	18.016	104177	0.70	25582	0.49	4.07	.tau.-Muurolol
18	18.170	89797	0.60	38533	0.74	2.33	.alpha.-Cadinol
19	18.209	90763	0.61	39496	0.76	2.30	2-Naphthalenemethanol, decahydro-.alpha.,.alpha.,4a-trimethyl-8-methylene-, [2R-(2.alpha.,4a.alpha.,8a.beta.)]-
		14925392	100.00	5215047	100.00		

※1 設備提供：株式会社 久留米リサーチ・パーク

※2 使用機器：島津製作所製 GC-MS：QP2010 Plus

※3 分析条件：サンプルは有機溶媒で500倍に希釈後、直接導入法にて分析。

サンプル前処理…アセトンで500倍希釈、カラム…DB-5ms、

昇温条件…40℃(2min)-10℃/min-240℃(5min)、NISTライブラリにて同定。