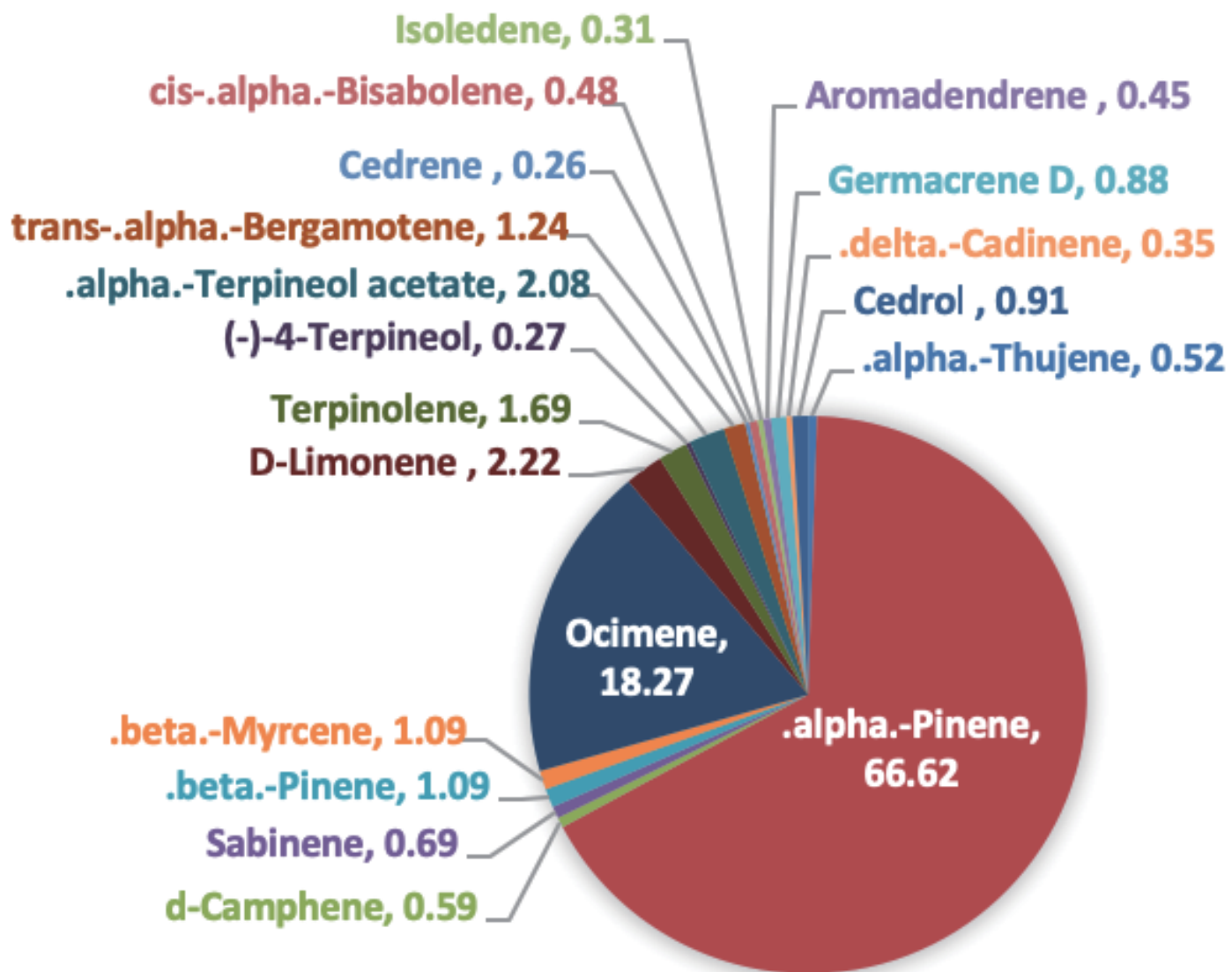
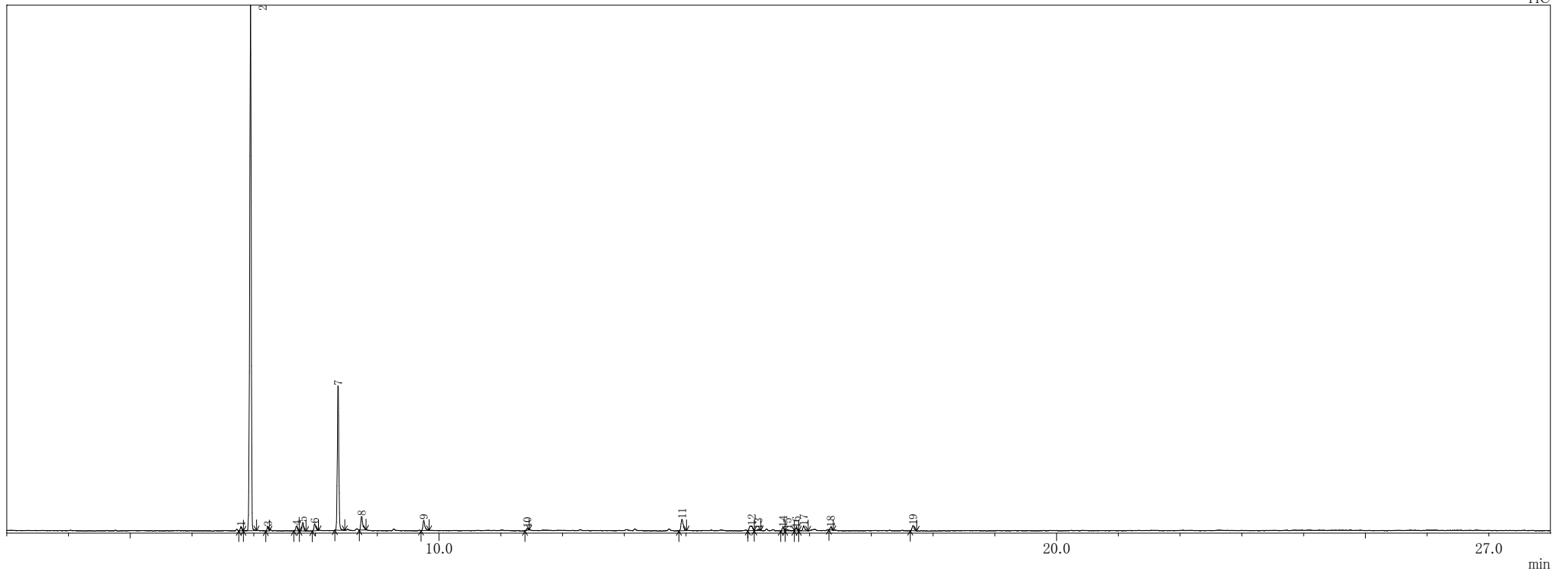


CYPRESS





ピークテーブル TIC

ピーク#	保持時間	面積	面積%	高さ	高さ%	A/H	化合物
1	6.793	43760	0.52	24516	0.51	1.78	Bicyclo[3.1.0]hex-2-ene, 2-methyl-5-(1-methylethyl)-
2	6.950	5652368	66.62	3295666	69.07	1.72	Bicyclo[3.1.1]hept-2-ene, 2,6,6-trimethyl-, (+/-)-
3	7.231	49721	0.59	27108	0.57	1.83	Bicyclo[2.2.1]heptane, 2,2-dimethyl-3-methylene-, (1R)-
4	7.695	58557	0.69	31042	0.65	1.89	Bicyclo[3.1.0]hexane, 4-methylene-1-(1-methylethyl)-
5	7.796	92700	1.09	52496	1.10	1.77	.beta.-Pinene
6	7.988	92359	1.09	43064	0.90	2.14	.beta.-Myrcene
7	8.367	1550481	18.27	904664	18.96	1.71	1,3,6-Octatriene, 3,7-dimethyl-
8	8.748	188086	2.22	84762	1.78	2.22	D-Limonene
9	9.754	143636	1.69	64753	1.36	2.22	Cyclohexene, 4-methyl-3-(1-methylethylidene)-
10	11.431	22735	0.27	11160	0.23	2.04	3-Cyclohexen-1-ol, 4-methyl-1-(1-methylethyl)-, (R)-
11	13.934	176348	2.08	71339	1.50	2.47	3-Cyclohexene-1-methanol, .alpha.,.alpha.,4-trimethyl-, acetate
12	15.063	105290	1.24	28561	0.60	3.69	Bicyclo[7.2.0]undec-4-ene, 4,11,11-trimethyl-8-methylene-, [1R-(1R*,4Z,9S*)]-
13	15.170	21680	0.26	7856	0.16	2.76	Cedrene
14	15.571	41088	0.48	20224	0.42	2.03	cis-.alpha.-Bisabolene
15	15.640	26454	0.31	8028	0.17	3.30	Isoledene
16	15.784	38014	0.45	16381	0.34	2.32	Aromadendrene
17	15.907	74569	0.88	30980	0.65	2.41	1,6-Cyclodecadiene, 1-methyl-5-methylene-8-(1-methylethyl)-, [s-(E,E)]-
18	16.346	29870	0.35	16884	0.35	1.77	Naphthalene, 1,2,3,5,6,8a-hexahydro-4,7-dimethyl-1-(1-methylethyl)-, (1S-cis)-
19	17.678	76916	0.91	32186	0.67	2.39	Cedrol
		8484632	100.00	4771670	100.00		

※1 設備提供：株式会社 久留米リサーチ・パーク

※2 使用機器：島津製作所製 GC-MS：QP2010 Plus

※3 分析条件：サンプルは有機溶媒で500倍に希釈後、直接導入法にて分析。

サンプル前処理…アセトンで500倍希釈、カラム…DB-5ms、

昇温条件…40°C(2min)-10°C/min-240°C(5min)、NISTライブラリにて同定。