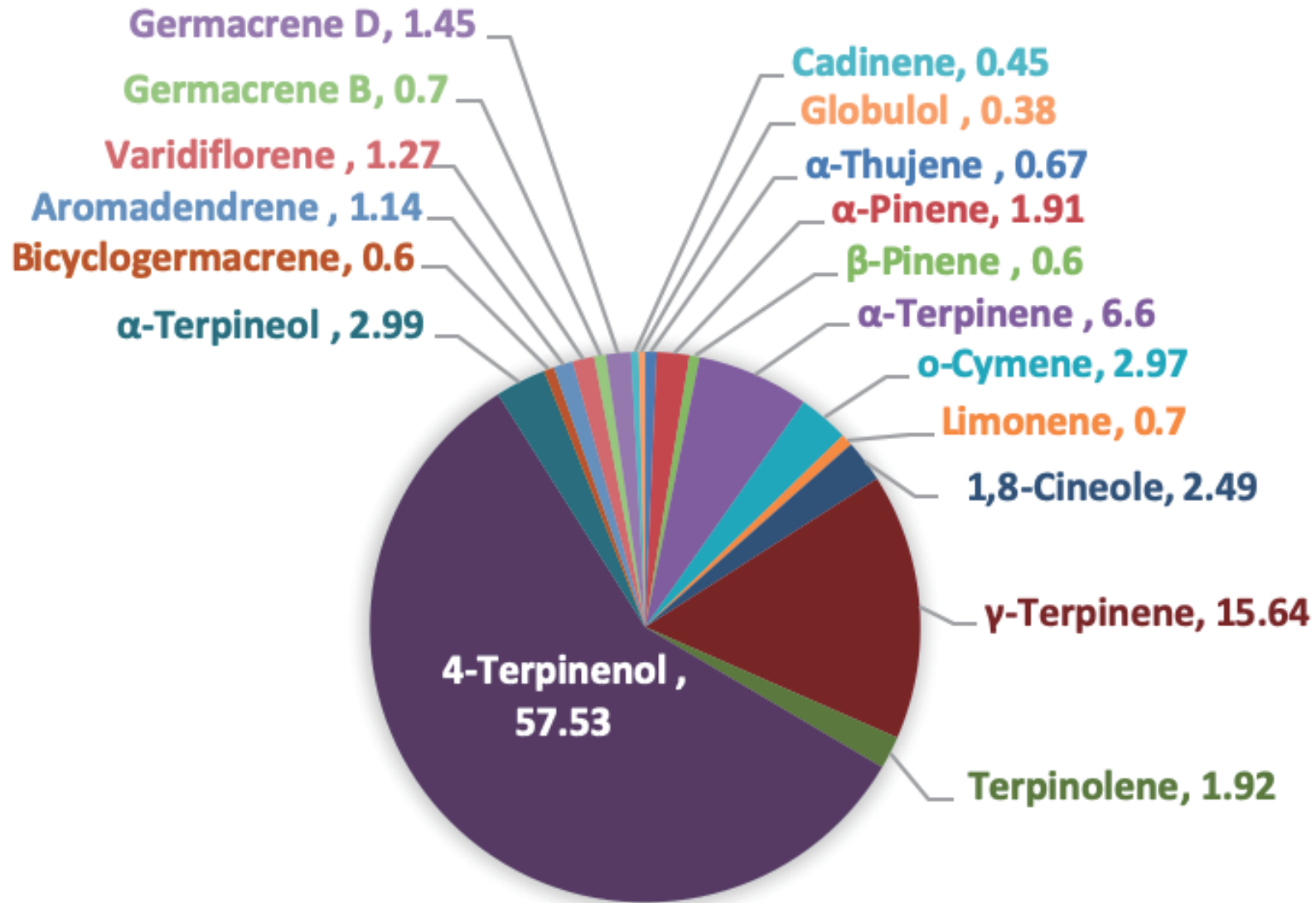
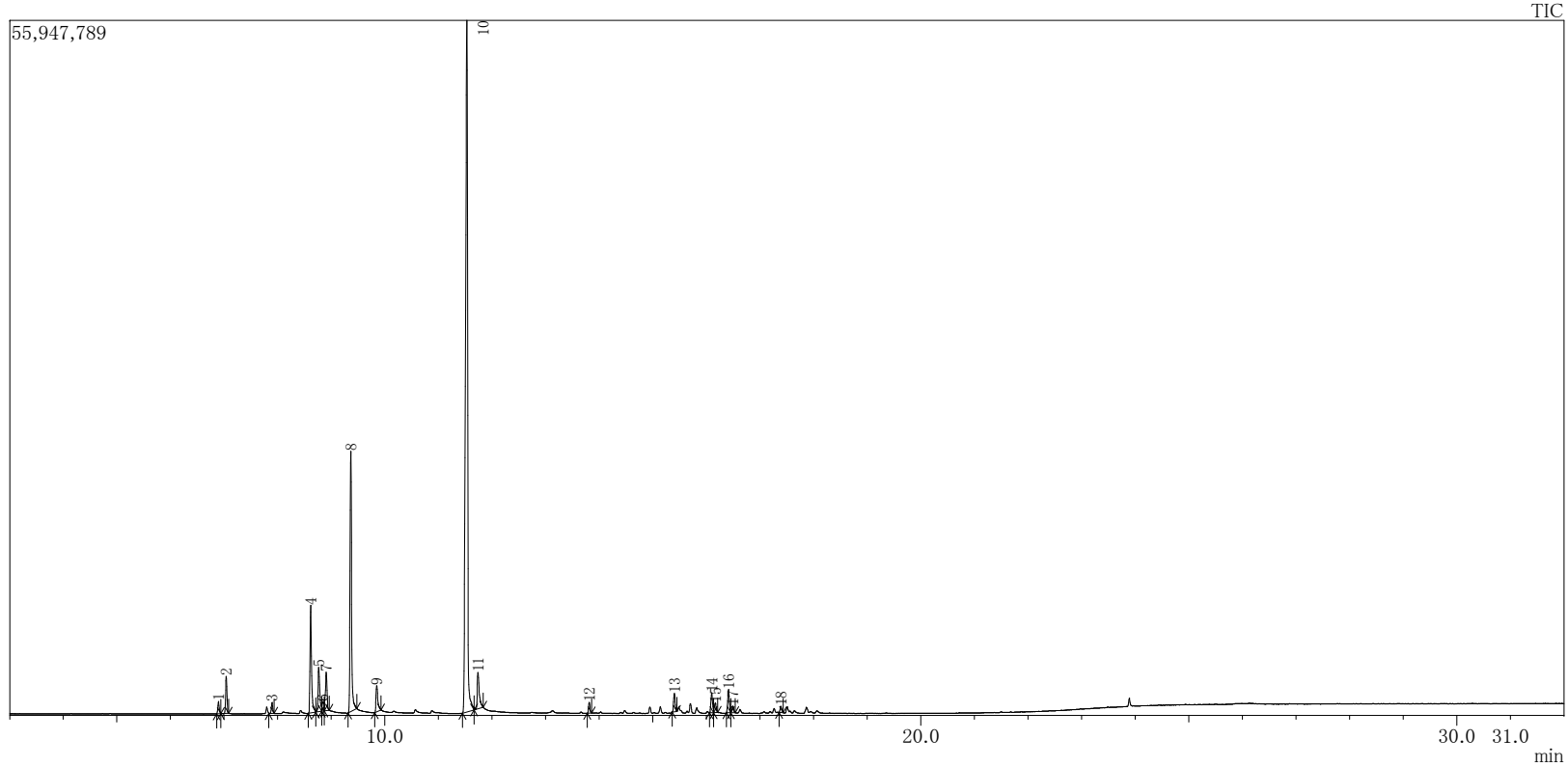


# TEA TREE



# Tea Tree



ピークテーブル TIC

ピーク#	保持時間	面積	面積%	高さ	高さ%	A/H	化合物
1	6.895	1787572	0.67	1000801	0.91	1.79	Bicyclo[3.1.0]hex-2-ene, 2-methyl-5-(1-methylethyl)-
2	7.041	5072309	1.91	2973872	2.70	1.71	.alpha.-Pinene
3	7.894	1587184	0.60	891432	0.81	1.78	.beta.-Pinene
4	8.616	17557974	6.60	8660821	7.86	2.03	Cyclohexene, 4-methyl-3-(1-methylethylidene)-
5	8.766	7911714	2.97	3572086	3.24	2.21	Benzene, 1-methyl-2-(1-methylethyl)-
6	8.840	1869216	0.70	694941	0.63	2.69	Limonene
7	8.906	6613855	2.49	3090300	2.80	2.14	Eucalyptol
8	9.364	41601929	15.64	20977255	19.04	1.98	Tricyclo[2.2.1.0(2,6)]heptane, 1,7,7-trimethyl-
9	9.847	5096019	1.92	2108025	1.91	2.42	Cyclohexene, 4-methyl-3-(1-methylethylidene)-
10	11.529	153027165	57.53	55674269	50.53	2.75	3-Cyclohexen-1-ol, 4-methyl-1-(1-methylethyl)-
11	11.737	7941855	2.99	2927582	2.66	2.71	3-Cyclohexene-1-methanol, .alpha...alpha.,4-trimethyl-, (S)-
12	13.812	1588117	0.60	857528	0.78	1.85	Bicyclogermacrene
13	15.400	3043120	1.14	1491537	1.35	2.04	Aromadendrene
14	16.097	3373905	1.27	1593752	1.45	2.12	1H-Cycloprop[e]azulene, decahydro-1,1,7-trimethyl-4-methylene-
15	16.164	1864899	0.70	760903	0.69	2.45	Bicyclogermacrene
16	16.410	3869337	1.45	1880491	1.71	2.06	1,6-Cyclodecadiene, 1-methyl-5-methylene-8-(1-methylethyl)-, [s-(E,E)]-
17	16.491	1194826	0.45	537709	0.49	2.22	Isoledene
18	17.387	1001975	0.38	487145	0.44	2.06	Globulol
		266002971	100.00	110180449	100.00		

※1 設備提供: 株式会社 久留米リサーチ・パーク

※2 使用機器: 島津製作所製 GC-MS: QP2010 Plus

※3 分析条件: サンプルは有機溶媒で500倍に希釈後、直接導入法にて分析。

サンプル前処理: アセトンで500倍希釈、カラム: DB-5ms、

昇温条件: 40°C(2min)-10°C/min-240°C(5min)、NISTライブラリにて同定。