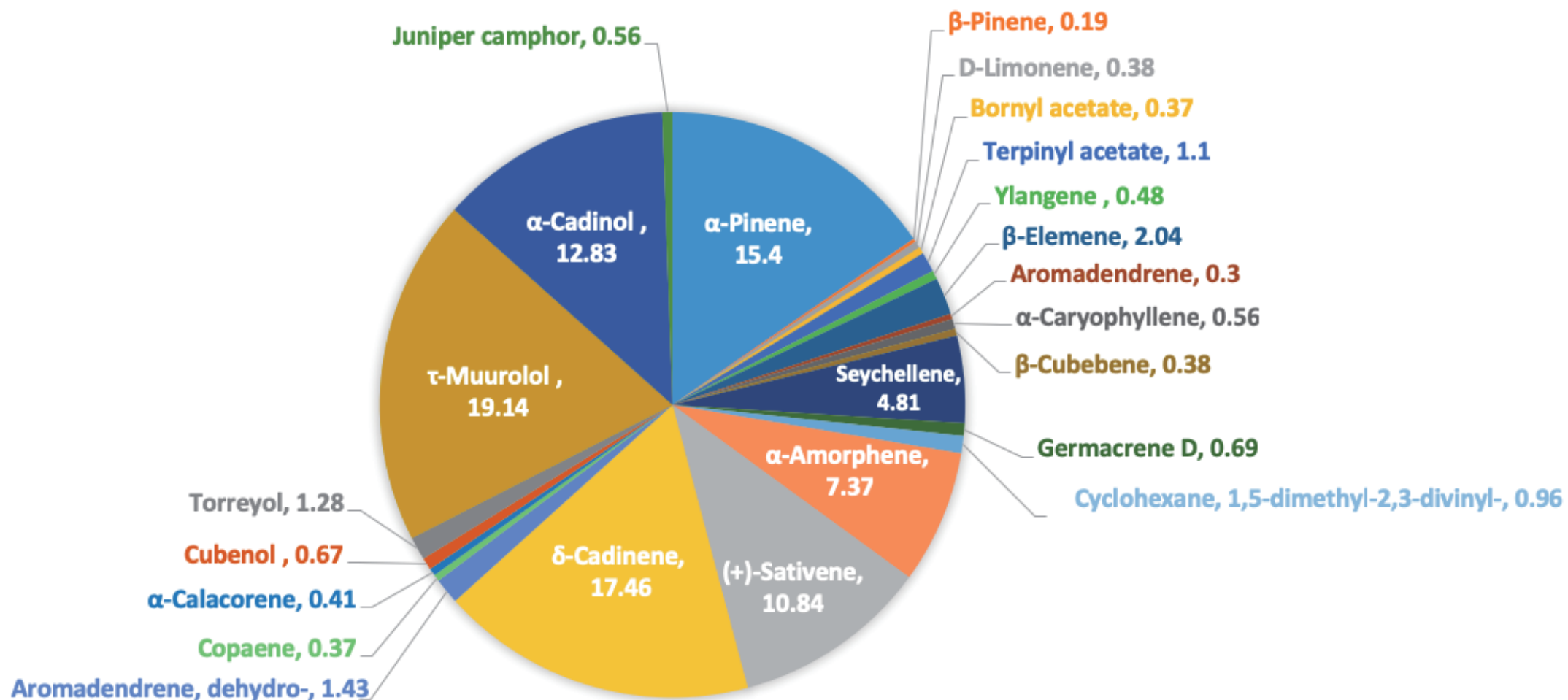
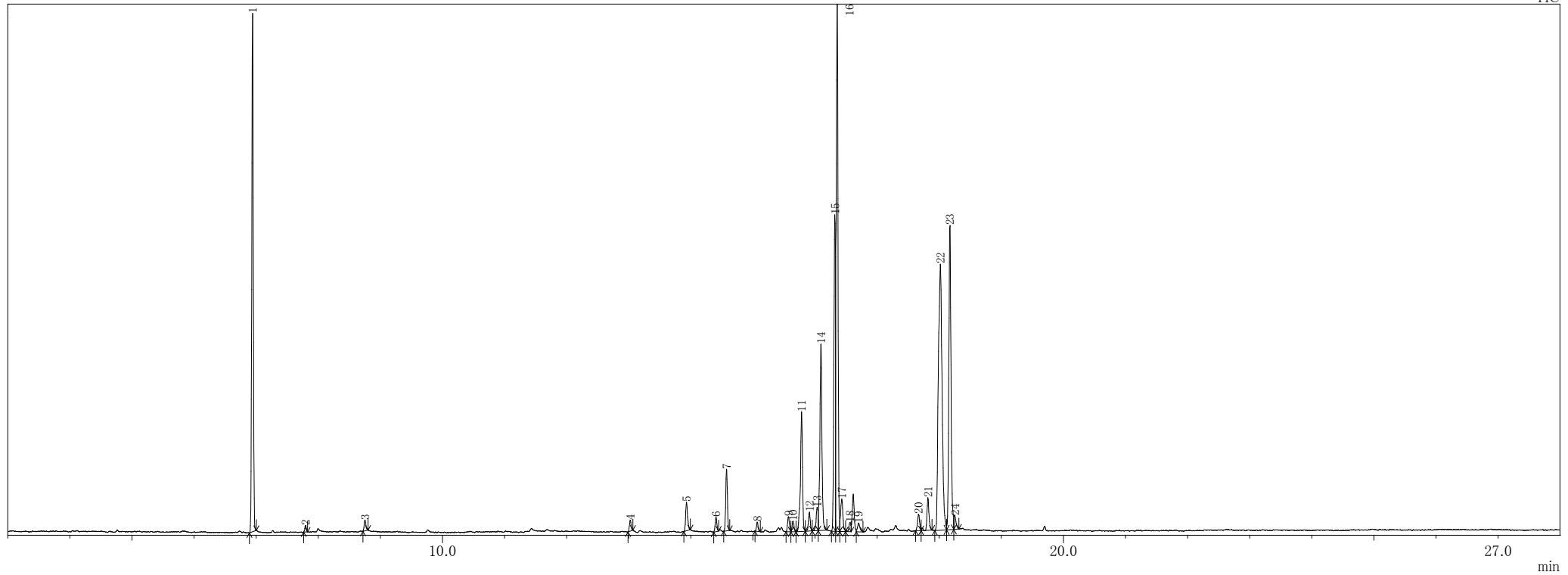


HINOKI



Hinoki

TIC



ピークテーブル TIC

ピーク#	保持時間	面積	面積%	高さ	高さ%	A/H	化合物
1	6.945	2585562	15.40	1509387	20.23	1.71	.alpha.-Pinene
2	7.798	32456	0.19	19493	0.26	1.67	.beta.-Pinene
3	8.754	63739	0.38	31869	0.43	2.00	D-Limonene
4	13.027	61474	0.37	32104	0.43	1.91	Bornyl acetate
5	13.931	184097	1.10	83790	1.12	2.20	3-Cyclohexene-1-methanol, .alpha.,.alpha.,4-trimethyl-, acetate
6	14.406	80565	0.48	42353	0.57	1.90	Ylangene
7	14.577	341862	2.04	179430	2.40	1.91	Cyclohexane, 1-ethenyl-1-methyl-2,4-bis(1-methylethenyl)-
8	15.071	49637	0.30	26782	0.36	1.85	Bicyclo[7.2.0]undec-4-ene, 4,11,11-trimethyl-8-methylene-, [1R-(1R*,4Z,9S*)]-
9	15.574	94442	0.56	43809	0.59	2.16	.alpha.-Caryophyllene
10	15.646	63390	0.38	31123	0.42	2.04	1H-Cyclopenta[1,3]cyclopropa[1,2]benzene, octahydro-7-methyl-3-methylene-4-(1-methylethyl)-, [3aS-(3a.alpha.,3b.beta.,4.beta.,7
11	15.785	807508	4.81	348405	4.67	2.32	Seychellene
12	15.910	116433	0.69	54942	0.74	2.12	1,6-Cyclodecadiene, 1-methyl-5-methylene-8-(1-methylethyl)-, [s-(E,E)]-
13	16.035	160897	0.96	67992	0.91	2.37	1,5-Cycloundecadiene, 8,8-dimethyl-9-methylene-
14	16.098	1236563	7.37	542747	7.27	2.28	Naphthalene, 1,2,4a,5,6,8a-hexahydro-4,7-dimethyl-1-(1-methylethyl)-
15	16.321	1819801	10.84	921943	12.36	1.97	1,4-Methanocycloocta[d]pyridazine, 1,4,4a,5,6,9,10,10a-octahydro-11,11-dimethyl-, (1.alpha.,4.alpha.,4a.alpha.,10a.alpha.)-
16	16.358	2931005	17.46	1534808	20.57	1.91	Naphthalene, 1,2,3,5,6,8a-hexahydro-4,7-dimethyl-1-(1-methylethyl)-, (1S-cis)-
17	16.433	239274	1.43	94126	1.26	2.54	Cycloisolongifolene, 8,9-dehydro-
18	16.565	62117	0.37	27255	0.37	2.28	Naphthalene, 1,2,3,4,4a,7-hexahydro-1,6-dimethyl-4-(1-methylethyl)-
19	16.704	69075	0.41	25987	0.35	2.66	.alpha.-Calacorene
20	17.668	111982	0.67	48213	0.65	2.32	Cubanol
21	17.820	214121	1.28	94733	1.27	2.26	1-Naphthalenol, 1,2,3,4,4a,7,8,8a-octahydro-1,6-dimethyl-4-(1-methylethyl)-, [1R-(1.alpha.,4.beta.,4a.beta.,8a.beta.)]-
22	18.020	3212206	19.14	774816	10.38	4.15	.tau.-Muurolol
23	18.173	2153111	12.83	885791	11.87	2.43	.alpha.-Cadinol
24	18.255	93505	0.56	39334	0.53	2.38	1-Naphthalenol, decahydro-1,4a-dimethyl-7-(1-methylethylidene)-, [1R-(1.alpha.,4a.beta.,8a.alpha.)]-
		16784822	100.00	7461232	100.00		

※1 設備提供: 株式会社 久留米サーチ・パーク

※2 使用機器: 島津製作所製 GC-MS: QP2010 Plus

※3 分析条件: サンプルは有機溶媒で500倍に希釈後、直接導入法にて分析。

サンプル前処理...アセトンで500倍希釈、カラム...DB-5ms、

昇温条件...40°C(2min)-10°C/min-240°C(5min)、NISTライブラリにて同定。