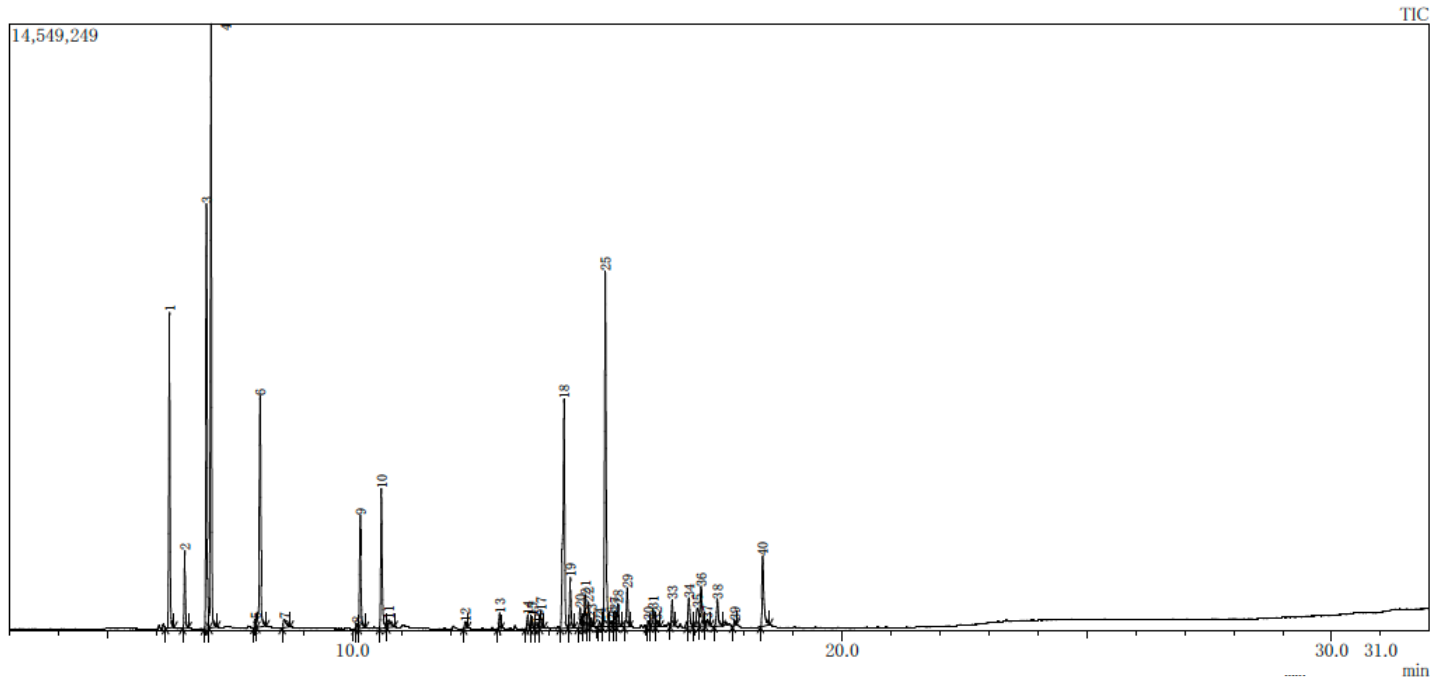


Yarrow



ピーク#	保持時間	面積	面積%	高さ	高さ%	A/H	化合物
1	6.262	12692617	8.71	7553383	10.29	1.68	.alpha.-Pinene
2	6.576	3162136	2.17	1860325	2.54	1.70	Camphene
3	7.019	18203920	12.49	10175320	13.87	1.79	Bicyclo[3.1.0]hexane, 4-methylene-1-(1-methylethyl)-
4	7.110	24449545	16.77	14468310	19.72	1.69	Bicyclo[3.1.1]heptane, 6,6-dimethyl-2-methylene-, (1S)-
5	8.017	473242	0.32	199516	0.27	2.37	Benzene, 1-methyl-3-(1-methylethyl)-
6	8.113	10733453	7.36	5534653	7.54	1.94	Eucalyptol
7	8.606	751791	0.52	200228	0.27	3.75	.gamma.-Terpinene
8	10.085	272590	0.19	116051	0.16	2.35	Bicyclo[3.1.1]heptan-3-ol, 6,6-dimethyl-2-methylene-, [1S-(1.alpha.,3.alpha.,5.alpha.)]-
9	10.159	5132481	3.52	2707470	3.69	1.90	(+)-2-Bornanone
10	10.590	6526067	4.48	3351377	4.57	1.95	endo-Borneol
11	10.741	679431	0.47	176566	0.24	3.85	Terpinen-4-ol
12	12.305	396735	0.23	162593	0.22	2.07	Acetic acid, 1,7,7-trimethyl-bicyclo[2.2.1]hept-2-yl ester
13	13.006	715034	0.49	376252	0.51	1.90	Cyclohexane, 1-ethenyl-1-methyl-2-(1-methylethenyl)-4-(1-methylethylidene)-
14	13.579	740692	0.51	317696	0.43	2.33	1,2,4-Metheno-1H-indene, octahydro-1,7a-dimethyl-5-(1-methylethyl)-, [1S-(1.alpha.,2.alpha.,3a.beta.,4.alpha.,5.alpha.)]-
15	13.668	580803	0.40	284762	0.39	2.04	Copaene
16	13.795	283341	0.19	119300	0.16	2.38	(-)-beta.-Bourbonene
17	13.847	834985	0.57	411700	0.56	2.03	Cyclohexane, 1-ethenyl-1-methyl-2,4-bis(1-methylethenyl)-, [1S-(1.alpha.,2.beta.,4.beta.)]-
18	14.320	13311737	9.13	5492292	7.48	2.42	Carophyllene
19	14.450	2398562	1.65	1207906	1.65	1.99	1H-Cyclopenta[1,3]cyclopropan[1,2]benzene, octahydro-7-methyl-3-methylene-4-(1-methylethyl)-, [3aS-(3a.alpha.,3b.alpha.)]-
20	14.650	980636	0.67	483884	0.66	2.03	(S,1Z,6Z)-8-Isopropyl-1-methyl-5-methylenecyclodeca-1,6-diene
21	14.755	1645888	1.13	781671	1.07	2.11	(S,1Z,6Z)-8-Isopropyl-1-methyl-5-methylenecyclodeca-1,6-diene
22	14.819	1157439	0.79	596814	0.81	1.94	Humulene
23	14.880	403731	0.28	209255	0.29	1.93	Germaacrene D
24	15.048	253515	0.17	121170	0.17	2.09	.gamma.-Muurolene
25	15.165	18333981	12.58	8514958	11.60	3.15	Germaacrene D
26	15.289	411113	0.28	130461	0.18	3.15	Naphthalene, decahydro-4a-methyl-1-methylene-7-(1-methylethenyl)-, [4aR-(4a.alpha.,7.alpha.,8a.beta.)]-
27	15.357	814403	0.56	361499	0.49	2.25	1,5-Cyclodecadiene, 1,5-dimethyl-8-(1-methylethylidene)-, (E,E)-
28	15.423	1209058	0.83	549972	0.75	2.20	(S,1Z,6Z)-8-Isopropyl-1-methyl-5-methylenecyclodeca-1,6-diene
29	15.612	2079611	1.43	928153	1.26	2.24	1-Isopropyl-4,7-dimethyl-1,2,3,5,6,8a-hexahydronaphthalene
30	16.043	269671	0.18	136519	0.19	1.98	Cyclohexanemethanol, 4-ethenyl-.alpha.,.alpha.,4-trimethyl-3-(1-methylethenyl)-, [1R-(1.alpha.,3.alpha.,4.beta.)]-
31	16.141	1228706	0.84	405534	0.55	3.03	1,6,10-Dodecatrien-3-ol, 3,7,11-trimethyl-, (E)-
32	16.210	413861	0.28	152092	0.21	2.72	2H-2a,7-Methanoazuleno[5,6-b]loxirene, octahydro-3,6,6,7a-tetramethyl-
33	16.529	1263325	0.87	615338	0.84	2.05	Carophyllene oxide
34	16.872	1909054	1.31	692766	0.94	2.76	Spiro[atomol]
35	17.045	1522598	1.04	432337	0.59	3.52	(1R,7S,E)-7-Isopropyl-4,10-dimethylenecyclodec-5-enol
36	17.118	2457119	1.69	953363	1.30	2.58	Spiro[atomol]
37	17.245	402990	0.28	142096	0.19	2.84	.tau.-Cadinol
38	17.453	1786084	1.23	648369	0.88	2.75	.beta.-Acorenol
39	17.805	274551	0.19	132818	0.18	2.07	Humulenol-II
40	18.378	4699105	3.22	1676055	2.28	2.80	Chamazulene
		145795631	100.00	73380827	100.00		

※1 設備提供：株式会社 久留米リサーチ・パーク
 ※2 使用機器：島津製作所製 GC-MS：QP2010 Plus
 ※3 分析条件：サンプルは有機溶媒で500倍に希釈後、直接導入法にて分析。
 サンプル前処理…アセトンで500倍希釈、カラム…DB-5ms、
 昇温条件…40°C(2min)-10°C/min-240°C(5min)、NISTライブラリにて同定。

YARROW

