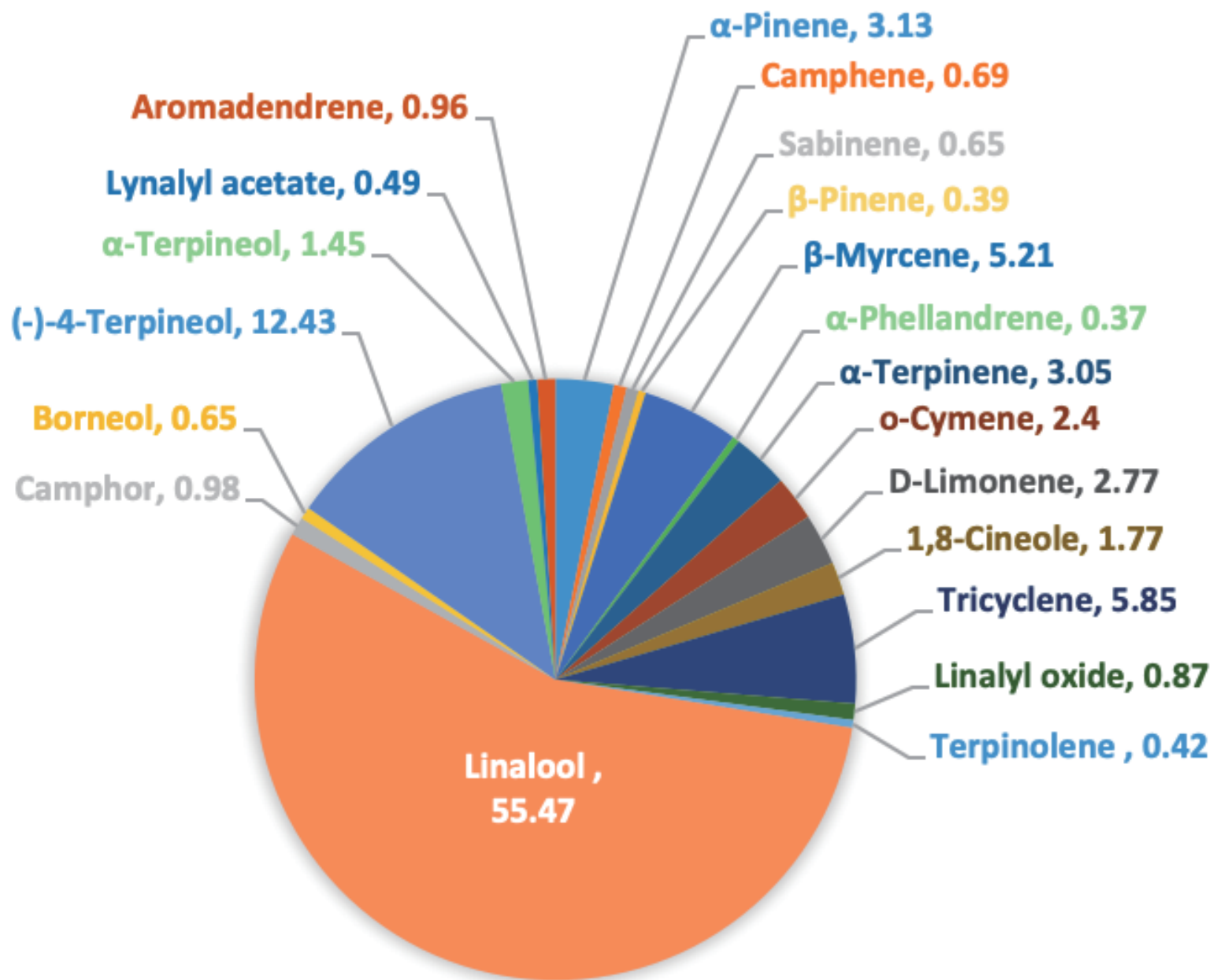
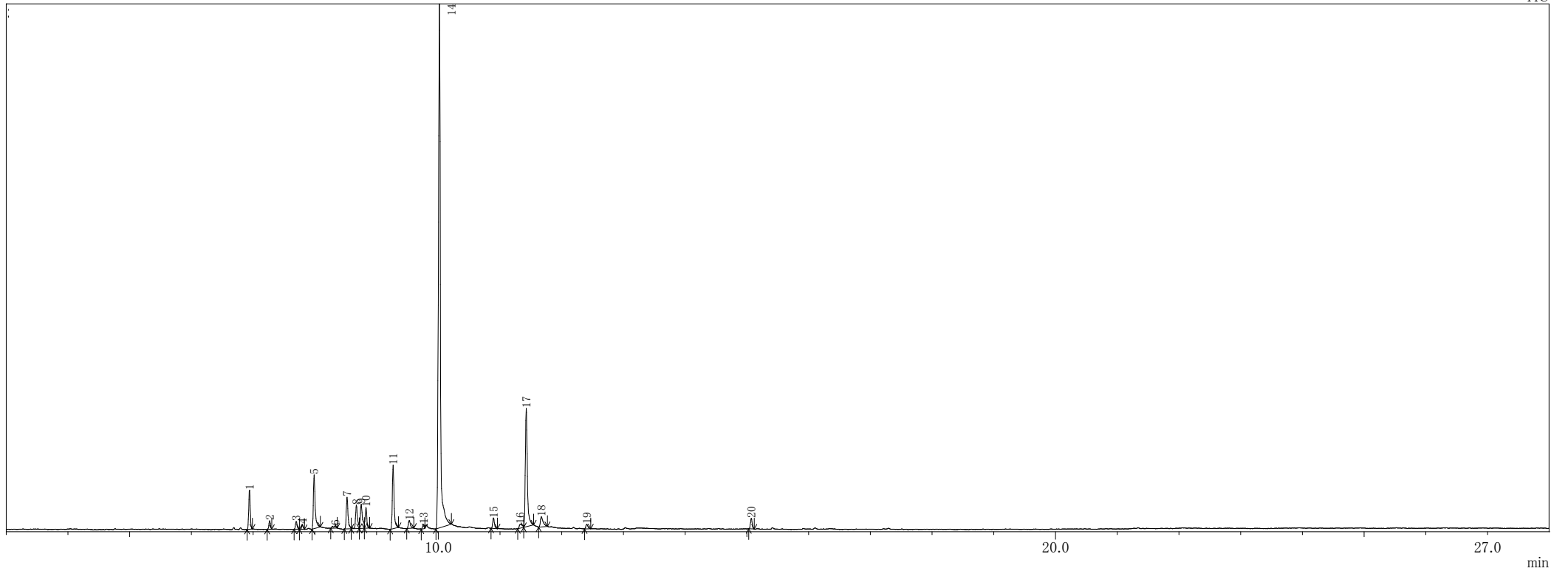


# THYME LINALOOL



# Thyme Linalool

TIC



ピークテーブル TIC

ピーク#	保持時間	面積	面積%	高さ	高さ%	A/H	化合物
1	6.943	385135	3.13	226042	4.03	1.70	.alpha.-Pinene
2	7.269	84496	0.69	49264	0.88	1.72	Camphene
3	7.700	80326	0.65	44898	0.80	1.79	Bicyclo[3.1.0]hexane, 4-methylene-1-(1-methylethyl)-
4	7.800	47961	0.39	27828	0.50	1.72	.beta.-Pinene
5	7.989	640040	5.21	309714	5.52	2.07	.beta.-Myrcene
6	8.329	45823	0.37	13551	0.24	3.38	Bicyclo[3.1.0]hexane, 4-methyl-1-(1-methylethyl)-, didehydro deriv.
7	8.523	374532	3.05	183294	3.26	2.04	1,3-Cyclohexadiene, 1-methyl-4-(1-methylethyl)-
8	8.675	295126	2.40	134861	2.40	2.19	Benzene, 1-methyl-2-(1-methylethyl)-
9	8.752	340347	2.77	139062	2.48	2.45	D-Limonene
10	8.831	217510	1.77	119849	2.13	1.81	Eucalyptol
11	9.269	719016	5.85	366364	6.53	1.96	Cyclopentene, 3-isopropenyl-5,5-dimethyl-
12	9.531	107374	0.87	46197	0.82	2.32	2-Furanmethanol, 5-ethenyltetrahydro-.alpha.,.alpha.,5-trimethyl-, cis-
13	9.762	51033	0.42	25429	0.45	2.01	Cyclohexene, 1-methyl-4-(1-methylethylidene)-
14	10.021	6817512	55.47	3017920	53.75	2.26	1,6-Octadien-3-ol, 3,7-dimethyl-
15	10.896	120943	0.98	60589	1.08	2.00	Bicyclo[2.2.1]heptan-2-one, 1,7,7-trimethyl-, (+/-)-
16	11.325	80416	0.65	22125	0.39	3.63	endo-Borneol
17	11.426	1527534	12.43	682449	12.16	2.24	3-Cyclohexen-1-ol, 4-methyl-1-(1-methylethyl)-, (R)-
18	11.671	177930	1.45	58264	1.04	3.05	3-Cyclohexene-1-methanol, .alpha.,.alpha.,4-trimethyl-, (S)-
19	12.406	60341	0.49	26461	0.47	2.28	1,6-Octadien-3-ol, 3,7-dimethyl-, acetate
20	15.073	117611	0.96	60052	1.07	1.96	Aromadendrene
		12291006	100.00	5614213	100.00		

※1 設備提供：株式会社 久留米リサーチ・パーク

※2 使用機器：島津製作所製 GC-MS：QP2010 Plus

※3 分析条件：サンプルは有機溶媒で500倍に希釈後、直接導入法にて分析。

サンプル前処理…アセトンで500倍希釈、カラム…DB-5ms、

昇温条件…40℃(2min)-10℃/min-240℃(5min)、NISTライブラリにて同定。