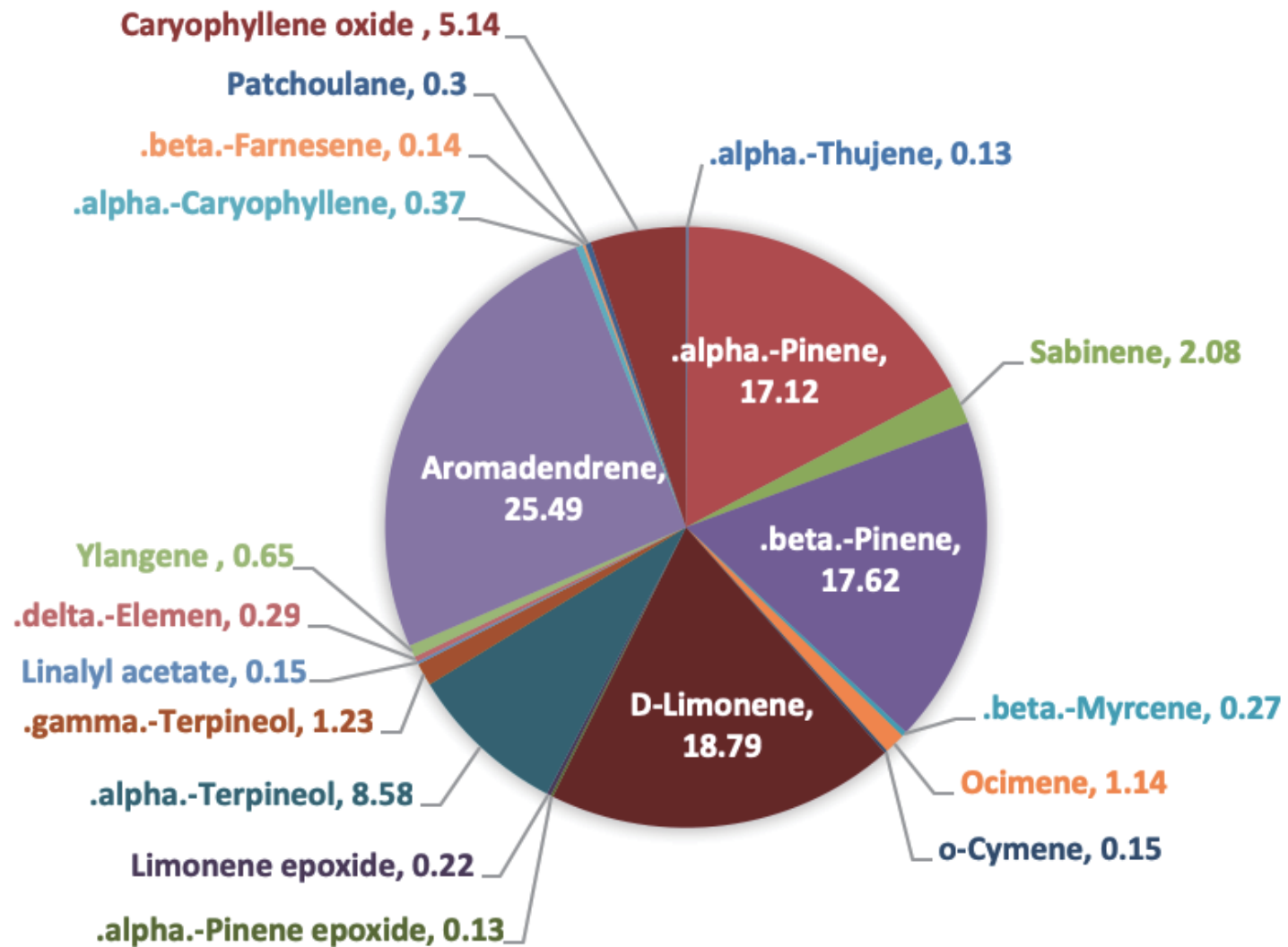
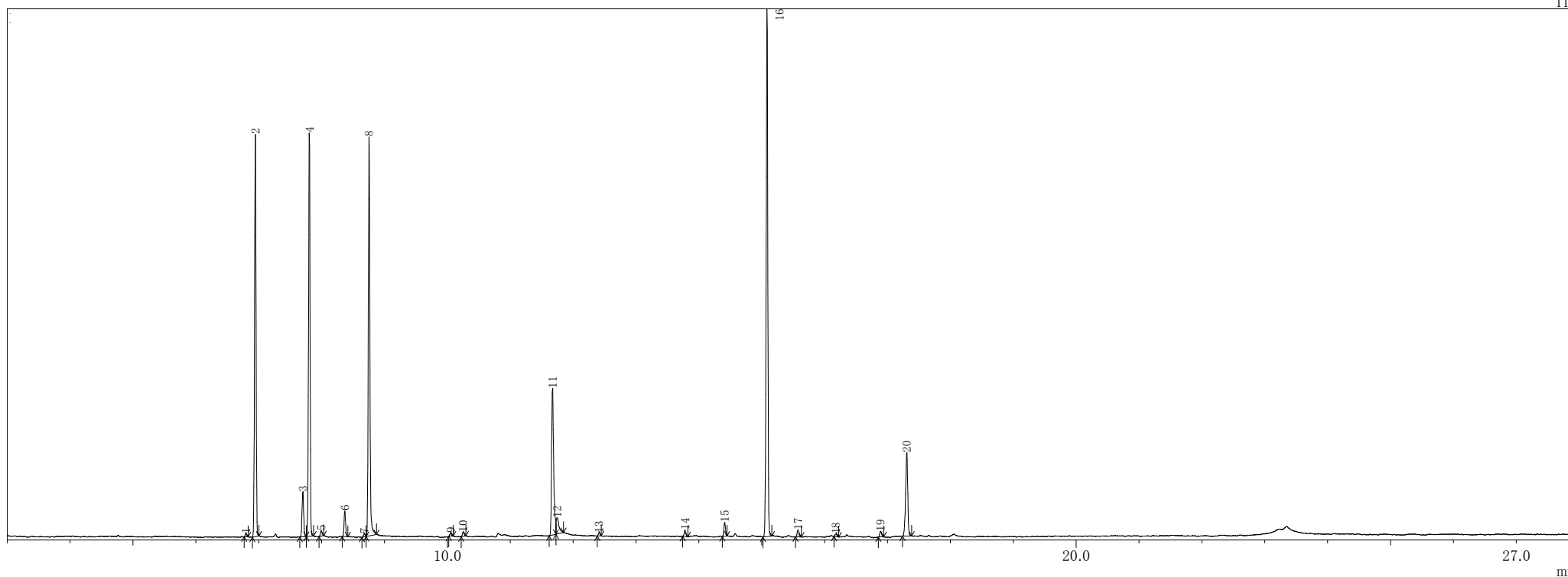


BLACK PEPPER



Black pepper

TIC



ピークテーブル TIC

ピーク#	保持時間	面積	面積%	高さ	高さ%	A/H	化合物
1	6.798	18924	0.13	11942	0.15	1.58	Bicyclo[3.1.0]hex-2-ene, 2-methyl-5-(1-methylethyl)-
2	6.948	2447002	17.12	1497000	19.09	1.63	Bicyclo[3.1.1]hept-2-ene, 2,6,6-trimethyl-, (+/-)-
3	7.703	297475	2.08	168036	2.14	1.77	Bicyclo[3.1.0]hexane, 4-methylene-1-(1-methylethyl)-
4	7.807	2518568	17.62	1500936	19.14	1.68	.beta.-Pinene
5	7.996	39119	0.27	20479	0.26	1.91	.beta.-Myrcene
6	8.371	163026	1.14	94937	1.21	1.72	1,3,6-Octatriene, 3,7-dimethyl-
7	8.680	20879	0.15	11810	0.15	1.77	Benzene, 1-methyl-2-(1-methylethyl)-
8	8.757	2686413	18.79	1484119	18.93	1.81	D-Limonene
9	10.054	18723	0.13	11303	0.14	1.66	3-Oxatricyclo[4.1.1.0(2,4)]octane, 2,7,7-trimethyl-
10	10.253	31244	0.22	15894	0.20	1.97	7-Oxabicyclo[4.1.0]heptane, 1-methyl-4-(1-methylethenyl)-
11	11.673	1226955	8.58	546653	6.97	2.24	3-Cyclohexene-1-methanol, .alpha.,.alpha.,4-trimethyl-, (S)-
12	11.746	176158	1.23	60460	0.77	2.91	Cyclohexanol, 1-methyl-4-(1-methylethylidene)-
13	12.413	21352	0.15	11266	0.14	1.90	1,6-Octadien-3-ol, 3,7-dimethyl-, acetate
14	13.781	41644	0.29	23591	0.30	1.77	Cyclohexene, 4-ethenyl-4-methyl-3-(1-methylethenyl)-1-(1-methylethyl)-, (3R-trans)-
15	14.411	93311	0.65	52317	0.67	1.78	Ylangene
16	15.086	3643252	25.49	1963112	25.03	1.86	Bicyclo[7.2.0]undec-4-ene, 4,11,11-trimethyl-8-methylene-, [1R-(1R*,4Z,9S*)]-
17	15.579	52551	0.37	25867	0.33	2.03	.alpha.-Caryophyllene
18	16.177	19511	0.14	9626	0.12	2.03	1,6,10-Dodecatriene, 7,11-dimethyl-3-methylene-
19	16.891	43510	0.30	21585	0.28	2.02	1H-3a,7-Methanoazulene, octahydro-1,4,9,9-tetramethyl-
20	17.309	734243	5.14	311020	3.97	2.36	Caryophyllene oxide
		14293860	100.00	7841953	100.00		

※1 設備提供：株式会社 久留米リサーチ・パーク

※2 使用機器：島津製作所製 GC-MS：QP2010 Plus

※3 分析条件：サンプルは有機溶媒で500倍に希釈後、直接導入法にて分析。

サンプル前処理…アセトンで500倍希釈、カラム…DB-5ms、

昇温条件…40°C(2min)-10°C/min-240°C(5min)、NISTライブラリにて同定。