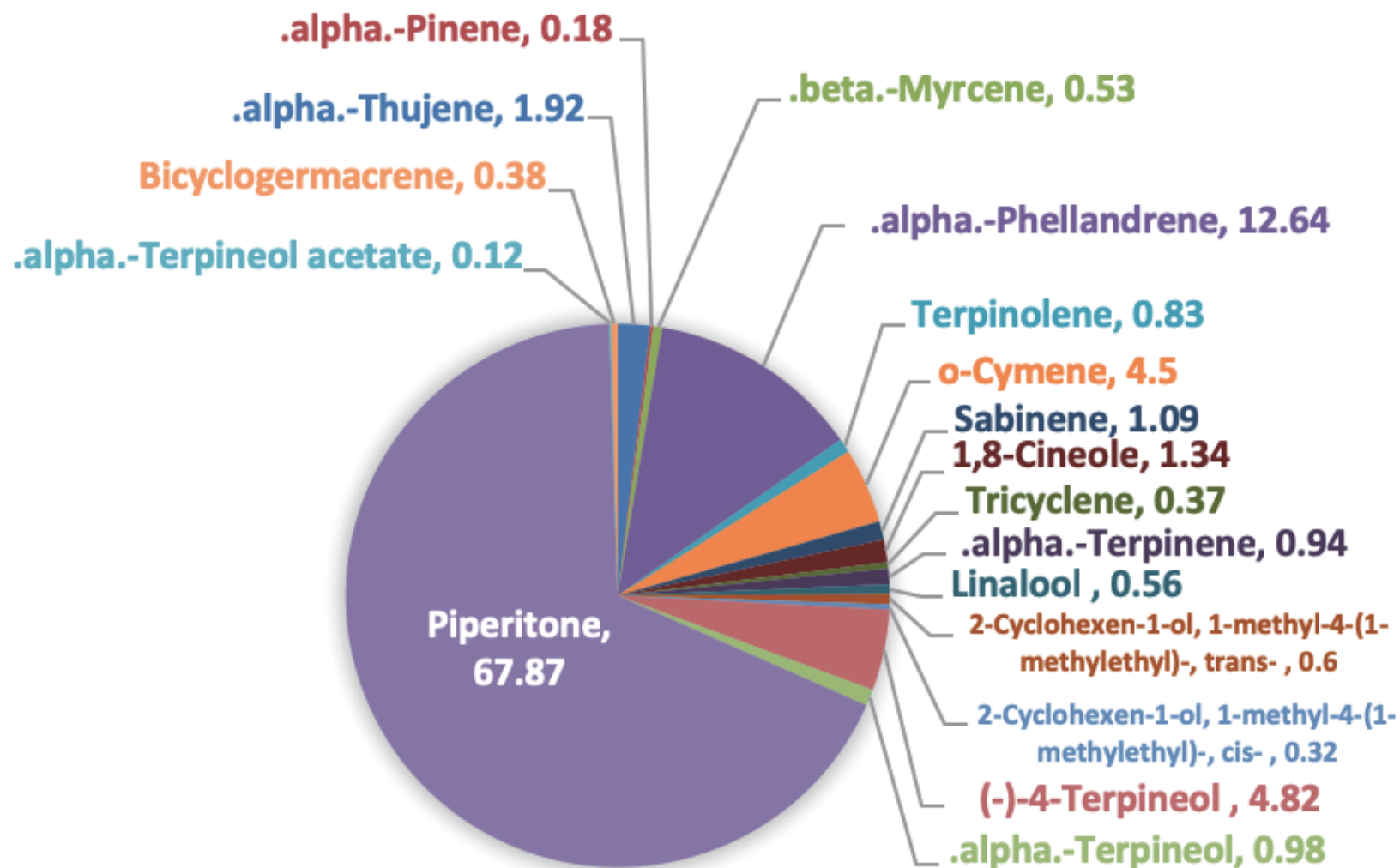
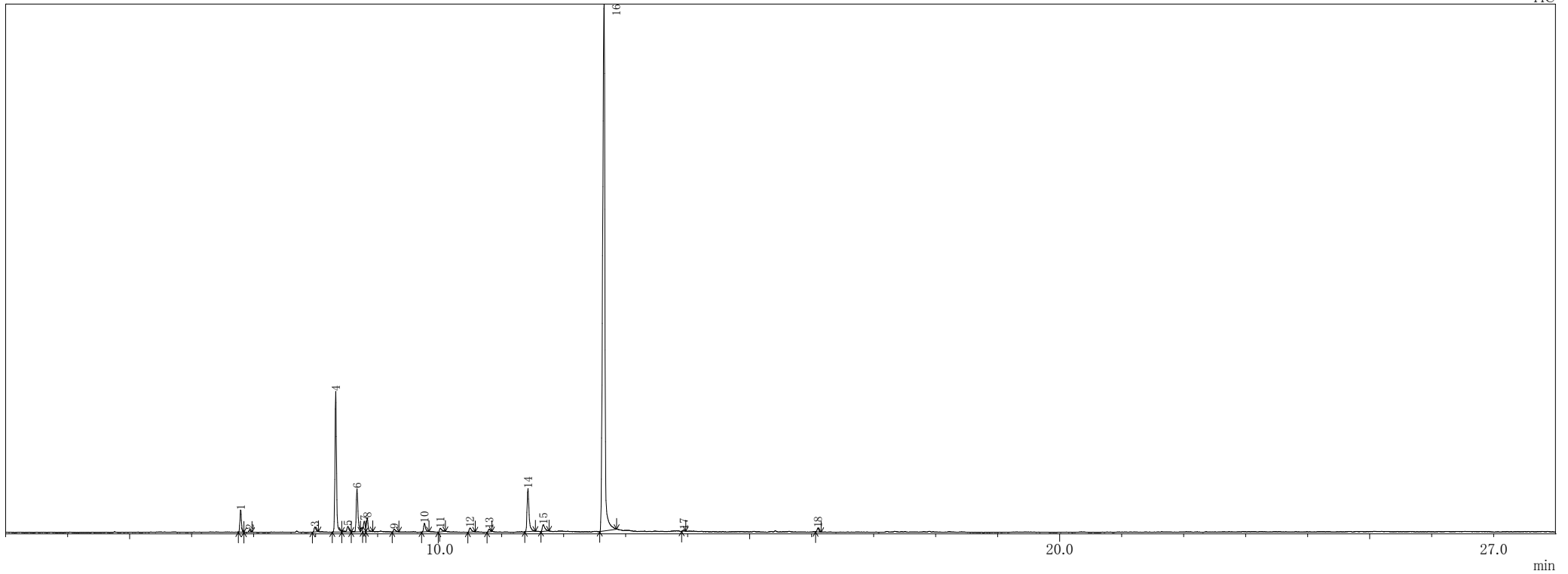


EUCALYPTUS DIVES



Eucalyptus Dives

TIC



ピークテーブル TIC

ピーク#	保持時間	面積	面積%	高さ	高さ%	A/H	化合物
1	6.792	238640	1.92	140093	2.59	1.70	Bicyclo[3.1.0]hex-2-ene, 2-methyl-5-(1-methylethyl)-
2	6.938	22907	0.18	15950	0.30	1.44	Bicyclo[3.1.1]hept-2-ene, 2,6,6-trimethyl-, (+/-)-
3	7.989	66531	0.53	32288	0.60	2.06	.beta.-Myrcene
4	8.325	1574224	12.64	896694	16.60	1.76	.alpha.-Phellandrene
5	8.521	103537	0.83	35473	0.66	2.92	Cyclohexene, 1-methyl-4-(1-methylethylidene)-
6	8.669	560920	4.50	274163	5.08	2.05	Benzene, 1-methyl-2-(1-methylethyl)-
7	8.786	135812	1.09	67615	1.25	2.01	Bicyclo[3.1.0]hexane, 4-methylene-1-(1-methylethyl)-
8	8.833	166527	1.34	86364	1.60	1.93	Eucalyptol
9	9.269	46503	0.37	18764	0.35	2.48	Cyclopentene, 3-isopropenyl-5,5-dimethyl-
10	9.756	117618	0.94	55256	1.02	2.13	Cyclohexene, 4-methyl-3-(1-methylethylidene)-
11	10.013	70225	0.56	24295	0.45	2.89	1,6-Octadien-3-ol, 3,7-dimethyl-
12	10.492	74358	0.60	26452	0.49	2.81	2-Cyclohexen-1-ol, 1-methyl-4-(1-methylethyl)-, trans-
13	10.800	39258	0.32	17470	0.32	2.25	2-Cyclohexen-1-ol, 1-methyl-4-(1-methylethyl)-, cis-
14	11.425	600131	4.82	274023	5.07	2.19	3-Cyclohexen-1-ol, 4-methyl-1-(1-methylethyl)-, (R)-
15	11.673	121657	0.98	42372	0.78	2.87	3-Cyclohexene-1-methanol, .alpha.,.alpha.,4-trimethyl-, (S)-
16	12.653	8451279	67.87	3360057	62.22	2.52	2-Cyclohexen-1-one, 3-methyl-6-(1-methylethyl)-
17	13.939	14919	0.12	8225	0.15	1.81	3-Cyclohexene-1-methanol, .alpha.,.alpha.,4-trimethyl-, acetate
18	16.103	47114	0.38	24870	0.46	1.89	Bicyclogermacrene
		12452160	100.00	5400424	100.00		

※1 設備提供：株式会社 久留米リサーチ・パーク

※2 使用機器：島津製作所製 GC-MS：QP2010 Plus

※3 分析条件：サンプルは有機溶媒で500倍に希釈後、直接導入法にて分析。

サンプル前処理…アセトンで500倍希釈、カラム…DB-5ms、

昇温条件…40°C(2min)-10°C/min-240°C(5min)、NISTライブラリにて同定。