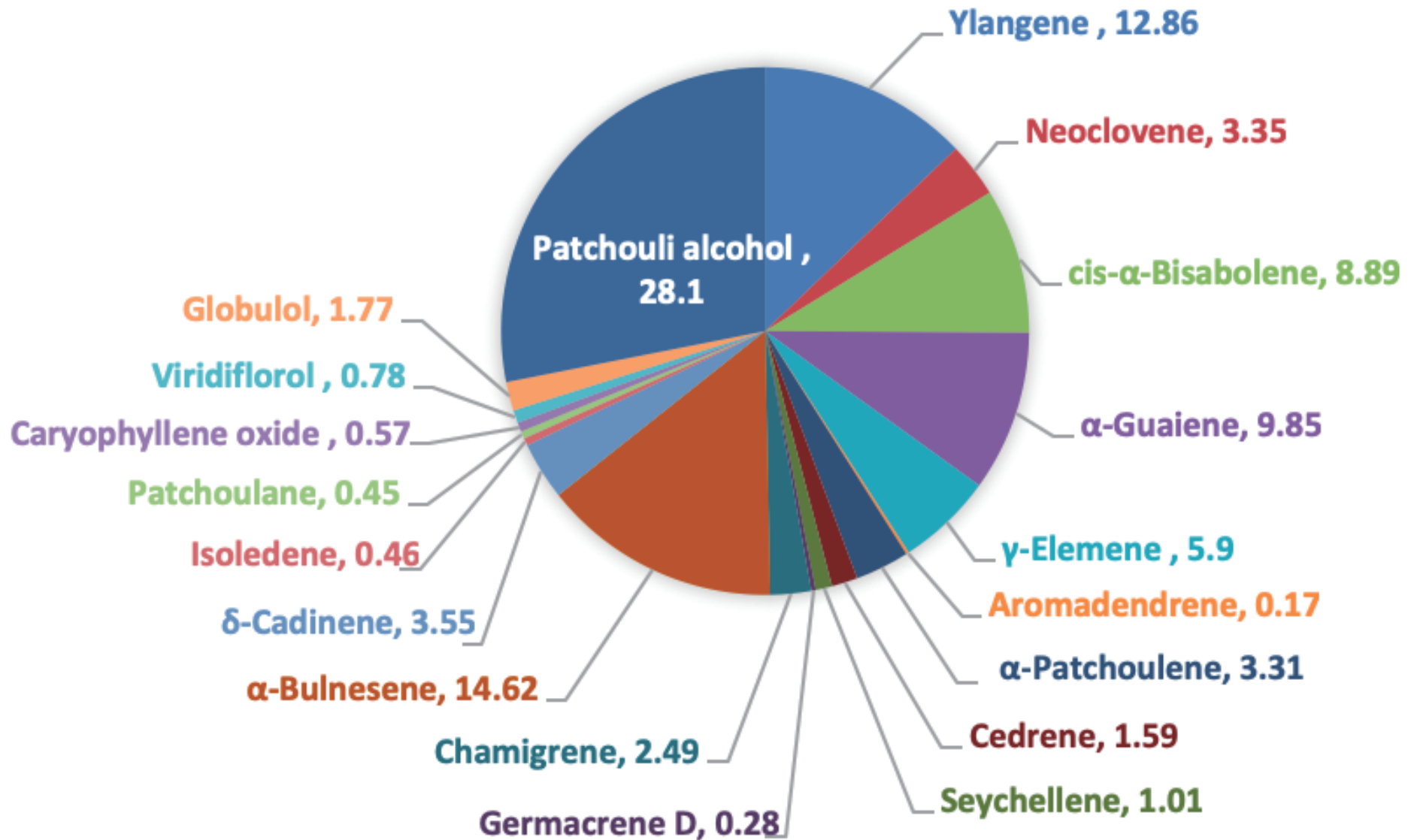
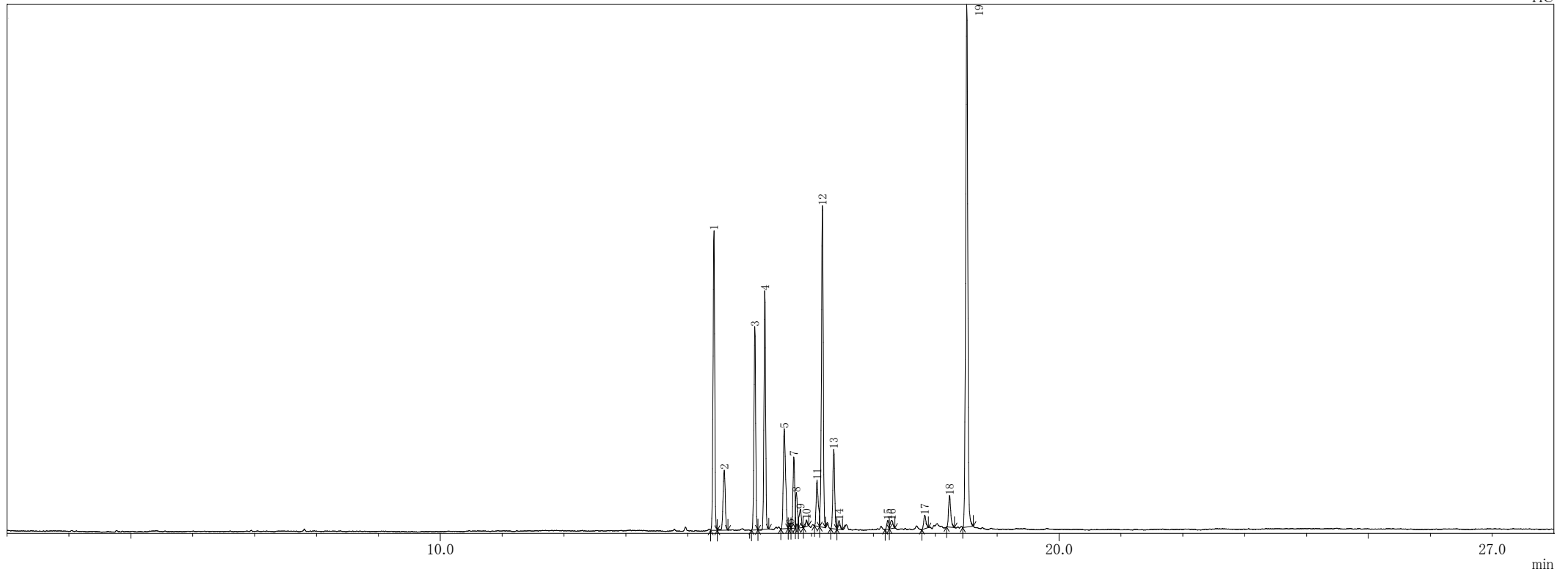


# PTCHOULI



## Patchouli

TIC



ピークテーブル TIC

ピーク#	保持時間	面積	面積%	高さ	高さ%	A/H	化合物
1	14.423	2352237	12.86	1231247	14.41	1.91	Ylangene
2	14.591	613357	3.35	246587	2.89	2.49	Seychellene
3	15.086	1624995	8.89	836494	9.79	1.94	Bicyclo[7.2.0]undec-4-ene, 4,11,11-trimethyl-8-methylene-, [1R-(1R*,4Z,9S*)]-
4	15.246	1801385	9.85	980849	11.48	1.84	Azulene, 1,2,3,4,5,6,7,8-octahydro-1,4-dimethyl-7-(1-methylethenyl)-, [1S-(1.alpha.,4.alpha.,7.alpha.)]-
5	15.561	1078902	5.90	410771	4.81	2.63	cis-.alpha.-Bisabolene
6	15.655	30444	0.17	14421	0.17	2.11	Aromadendrene
7	15.716	605525	3.31	293090	3.43	2.07	1H-3a,7-Methanoazulene, 2,3,6,7,8,8a-hexahydro-1,4,9,9-tetramethyl-, (1.alpha.,3a.alpha.,7.alpha.,8a.beta.)-
8	15.756	290126	1.59	146043	1.71	1.99	Cedrene
9	15.821	185292	1.01	77337	0.91	2.40	Seychellene
10	15.919	51169	0.28	26498	0.31	1.93	1,6-Cyclodecadiene, 1-methyl-5-methylene-8-(1-methylethyl)-, [s-(E,E)]-
11	16.090	456255	2.49	189628	2.22	2.41	Seychellene
12	16.177	2674270	14.62	1321317	15.47	2.02	Azulene, 1,2,3,5,6,7,8,8a-octahydro-1,4-dimethyl-7-(1-methylethenyl)-, [1S-(1.alpha.,7.alpha.,8a.beta.)]-
13	16.360	649225	3.55	326642	3.82	1.99	Naphthalene, 1,2,3,5,6,8a-hexahydro-4,7-dimethyl-1-(1-methylethyl)-, (1S-cis)-
14	16.445	83789	0.46	36506	0.43	2.30	Isoledene
15	17.233	82740	0.45	35613	0.42	2.32	Cyclohexane, 1,1,2-trimethyl-3,5-bis(1-methylethenyl)-, (2.alpha.,3.beta.,5.beta.)-
16	17.295	104040	0.57	34683	0.41	3.00	cis-Z-.alpha.-Bisabolene epoxide
17	17.831	142086	0.78	56355	0.66	2.52	4aH-cycloprop[e]azulen-4a-ol, decahydro-1,1,4,7-tetramethyl-
18	18.232	323174	1.77	130150	1.52	2.48	1H-Cycloprop[e]azulen-4-ol, decahydro-1,1,4,7-tetramethyl-, [1ar-(1a.alpha.,4.beta.,4a.beta.,7.alpha.,7a.beta.,7b.alpha.)]-
19	18.511	5139485	28.10	2147892	25.14	2.39	Patchouli alcohol
		18288496	100.00	8542123	100.00		

※1 設備提供：株式会社 久留米リサーチ・パーク

※2 使用機器：島津製作所製 GC-MS：QP2010 Plus

※3 分析条件：サンプルは有機溶媒で500倍に希釈後、直接導入法にて分析。

サンプル前処理…アセトンで500倍希釈、カラム…DB-5ms、

昇温条件…40℃(2min)-10℃/min-240℃(5min)、NISTライブラリにて同定。