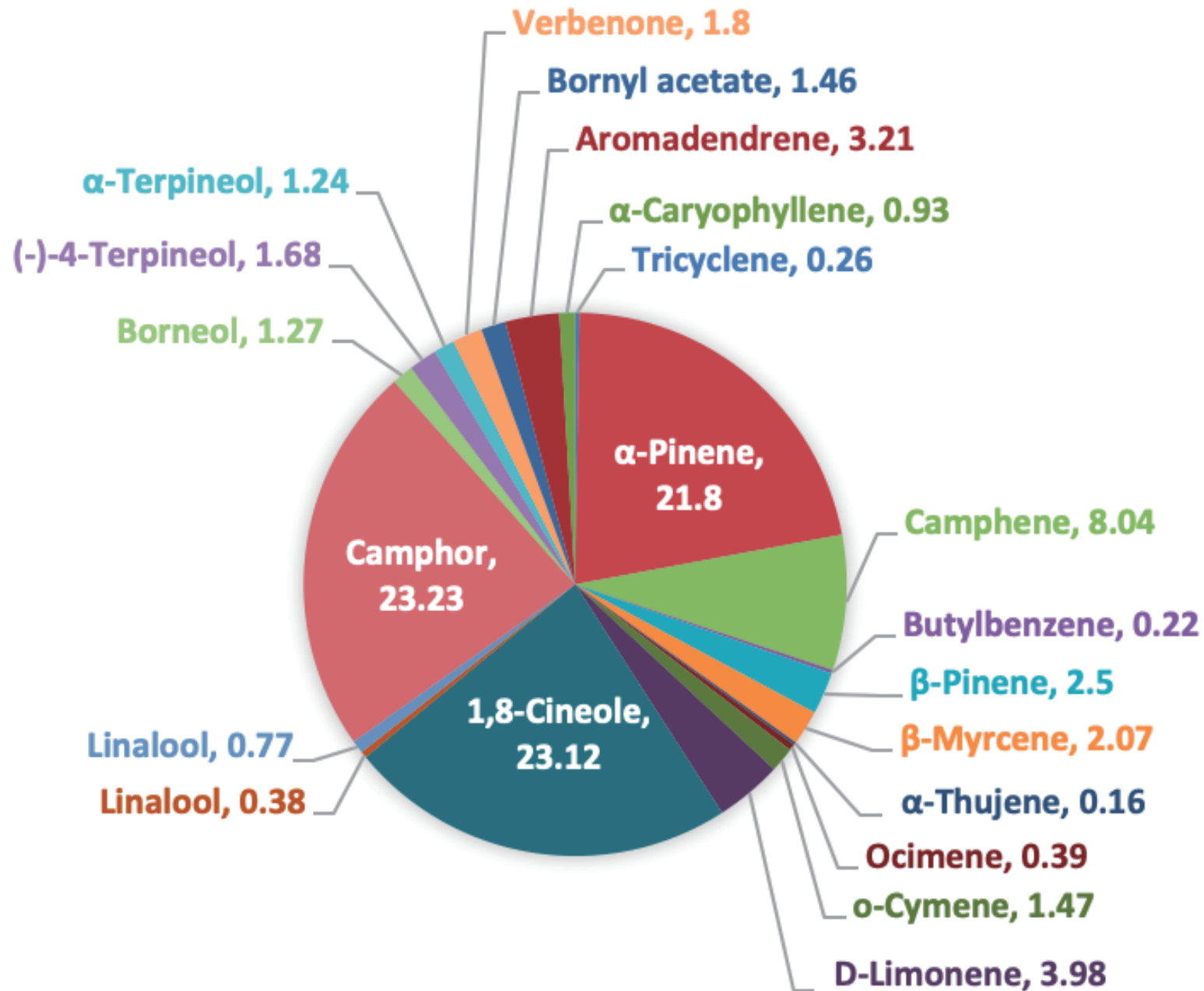
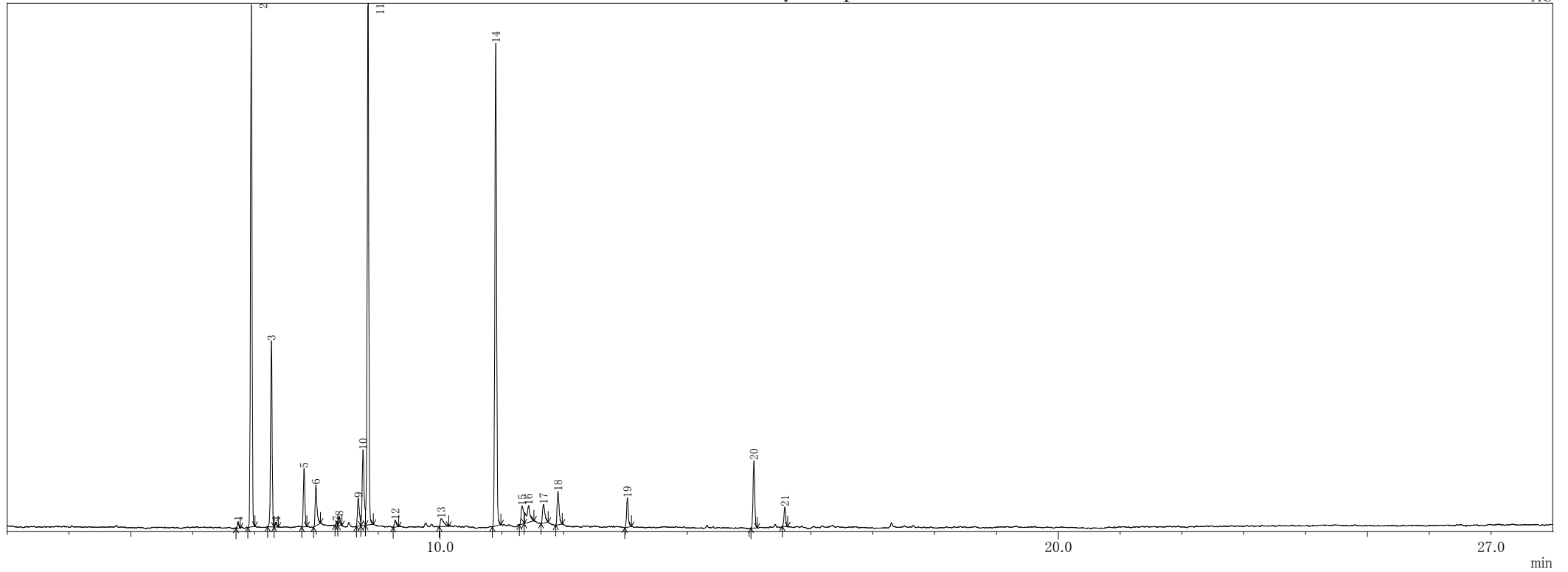


# ROSEMARY CAMPHOR



# Rosemary Camphor

TIC



ピークテーブル TIC

ピーク#	保持時間	面積	面積%	高さ	高さ%	A/H	化合物
1	6.735	26456	0.26	16287	0.30	1.62	Tricyclo[2.2.1.0(2,6)]heptane, 1,7,7-trimethyl-
2	6.950	2191332	21.80	1297365	24.20	1.69	.alpha.-Pinene
3	7.274	808450	8.04	462383	8.62	1.75	Camphene
4	7.348	22477	0.22	12120	0.23	1.85	Bicyclo[3.1.0]hex-2-ene, 4-methylene-1-(1-methylethyl)-
5	7.803	251328	2.50	144768	2.70	1.74	.beta.-Pinene
6	7.995	208572	2.07	101057	1.88	2.06	.beta.-Myrcene
7	8.330	15964	0.16	9215	0.17	1.73	Bicyclo[3.1.0]hex-2-ene, 2-methyl-5-(1-methylethyl)-
8	8.371	39359	0.39	22330	0.42	1.76	1,3,6-Octatriene, 3,7-dimethyl-
9	8.681	147978	1.47	69691	1.30	2.12	Benzene, 1-methyl-2-(1-methylethyl)-
10	8.756	400619	3.98	188372	3.51	2.13	D-Limonene
11	8.838	2324473	23.12	1296409	24.18	1.79	Eucalyptol
12	9.279	37754	0.38	17010	0.32	2.22	Tricyclo[2.2.1.0(2,6)]heptane, 1,7,7-trimethyl-
13	10.022	77589	0.77	20070	0.37	3.87	1,6-Octadien-3-ol, 3,7-dimethyl-
14	10.904	2335137	23.23	1199884	22.38	1.95	Bicyclo[2.2.1]heptan-2-one, 1,7,7-trimethyl-, (+/-)-
15	11.329	127837	1.27	45136	0.84	2.83	endo-Borneol
16	11.433	169118	1.68	41406	0.77	4.08	3-Cyclohexen-1-ol, 4-methyl-1-(1-methylethyl)-, (R)-
17	11.675	125149	1.24	46344	0.86	2.70	3-Cyclohexene-1-methanol, .alpha.,.alpha.,4-trimethyl-, (S)-
18	11.909	180881	1.80	82683	1.54	2.19	D-Verbenone
19	13.033	147007	1.46	72882	1.36	2.02	Bornyl acetate
20	15.079	323183	3.21	167317	3.12	1.93	Bicyclo[7.2.0]undec-4-ene, 4,11,11-trimethyl-8-methylene-, [1R-(1R*,4Z,9S*)]-
21	15.579	93490	0.93	48626	0.91	1.92	.alpha.-Caryophyllene
		10054153	100.00	5361355	100.00		

※1 設備提供：株式会社 久留米リサーチ・パーク

※2 使用機器：島津製作所製 GC-MS：QP2010 Plus

※3 分析条件：サンプルは有機溶媒で500倍に希釈後、直接導入法にて分析。

サンプル前処理…アセトンで500倍希釈、カラム…DB-5ms、

昇温条件…40°C(2min)-10°C/min-240°C(5min)、NISTライブラリにて同定。