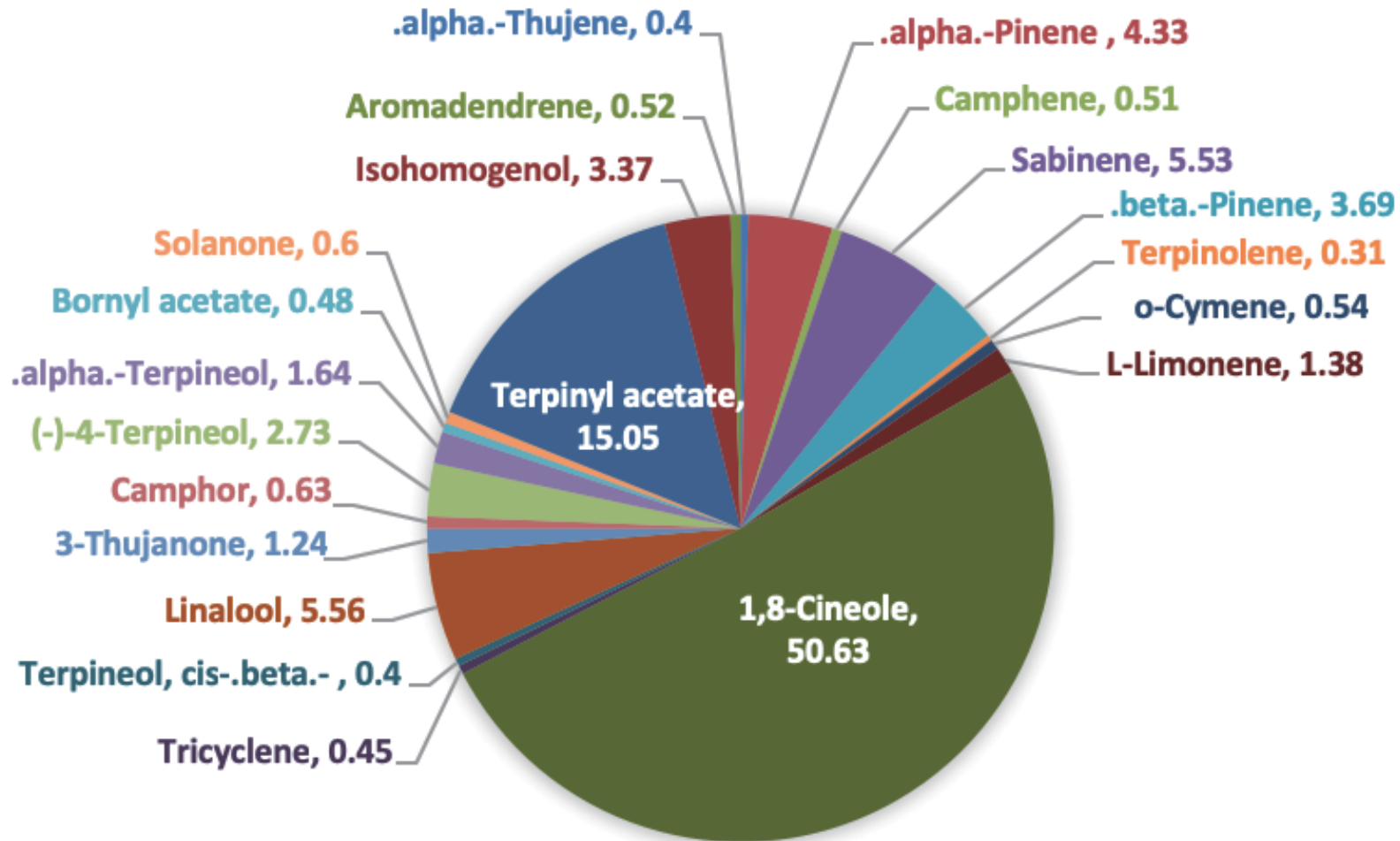
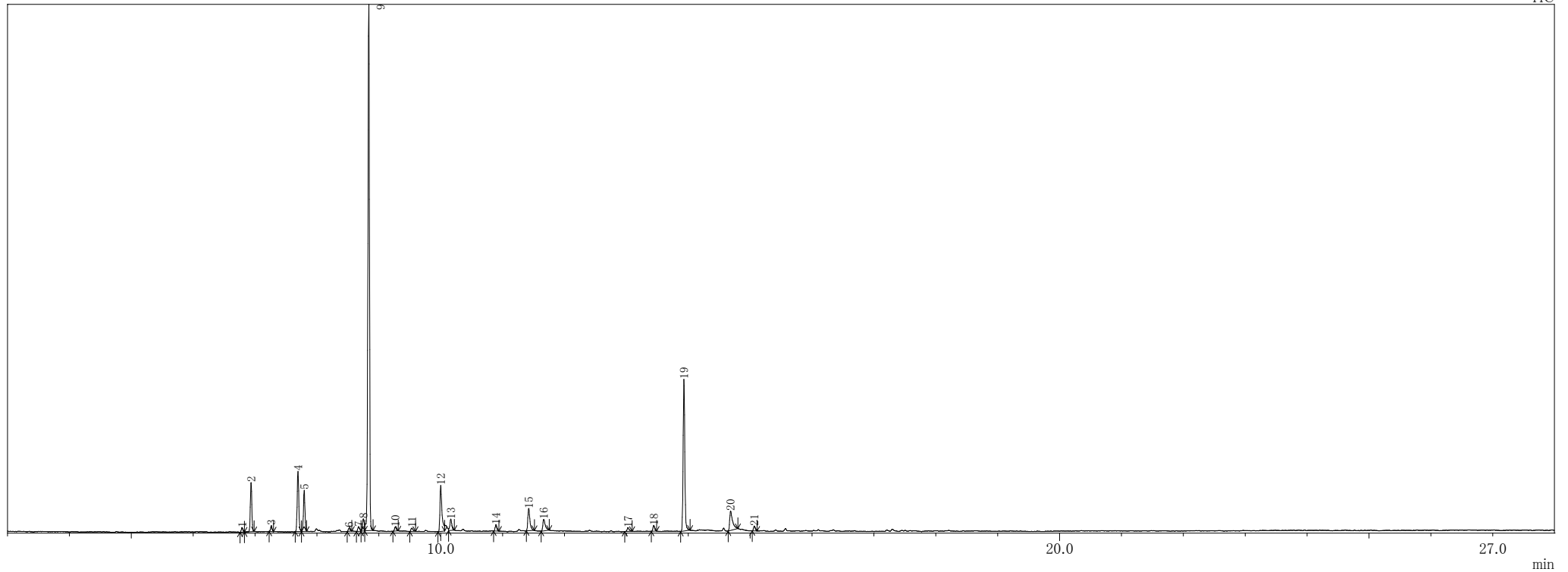


LAUREL



Laurel

TIC



ピークテーブル TIC

ピーク#	保持時間	面積	面積%	高さ	高さ%	A/H	化合物
1	6.792	42696	0.40	24651	0.43	1.73	Bicyclo[3.1.0]hex-2-ene, 2-methyl-5-(1-methylethyl)-
2	6.938	465556	4.33	278388	4.91	1.67	Bicyclo[3.1.1]hept-2-ene, 2,6,6-trimethyl-, (+/-)-
3	7.264	55188	0.51	33437	0.59	1.65	Camphene
4	7.695	594396	5.53	342637	6.04	1.73	Bicyclo[3.1.0]hexane, 4-methylene-1-(1-methylethyl)-
5	7.795	395893	3.69	234214	4.13	1.69	.beta.-Pinene
6	8.521	33672	0.31	18009	0.32	1.87	Cyclohexene, 1-methyl-4-(1-methylethylidene)-
7	8.675	57859	0.54	26611	0.47	2.17	Benzene, 1-methyl-2-(1-methylethyl)-
8	8.751	147724	1.38	69534	1.23	2.12	Cyclohexene, 1-methyl-4-(1-methylethenyl)-, (S)-
9	8.839	5438954	50.63	2988321	52.70	1.82	Eucalyptol
10	9.267	48471	0.45	24169	0.43	2.01	Cyclopentene, 3-isopropenyl-5,5-dimethyl-
11	9.536	43365	0.40	18072	0.32	2.40	Terpineol, cis-.beta.-
12	10.002	596840	5.56	261268	4.61	2.28	1,6-Octadien-3-ol, 3,7-dimethyl-
13	10.165	132816	1.24	63794	1.13	2.08	Bicyclo[3.1.0]hexan-3-one, 4-methyl-1-(1-methylethyl)-
14	10.895	67754	0.63	37058	0.65	1.83	Bicyclo[2.2.1]heptan-2-one, 1,7,7-trimethyl-, (+/-)-
15	11.423	293589	2.73	127229	2.24	2.31	3-Cyclohexen-1-ol, 4-methyl-1-(1-methylethyl)-, (R)-
16	11.666	176581	1.64	65005	1.15	2.72	3-Cyclohexene-1-methanol, .alpha.,.alpha.,4-trimethyl-, (S)-
17	13.028	51516	0.48	22096	0.39	2.33	Bornyl acetate
18	13.444	64800	0.60	33965	0.60	1.91	Terpin diacetate, trans-
19	13.931	1616958	15.05	862013	15.20	1.88	3-Cyclohexene-1-methanol, .alpha.,.alpha.,4-trimethyl-, acetate
20	14.686	361860	3.37	110869	1.96	3.26	Benzeneethanol, .beta.-butyl-
21	15.070	55714	0.52	28812	0.51	1.93	Bicyclo[7.2.0]undec-4-ene, 4,11,11-trimethyl-8-methylene-, [1R-(1R*,4Z,9S*)]-
		10742202	100.00	5670152	100.00		

※1 設備提供：株式会社 久留米リサーチ・パーク

※2 使用機器：島津製作所製 GC-MS：QP2010 Plus

※3 分析条件：サンプルは有機溶媒で500倍に希釈後、直接導入法にて分析。

サンプル前処理…アセトンで500倍希釈、カラム…DB-5ms、

昇温条件…40°C(2min)-10°C/min-240°C(5min)、NISTライブラリにて同定。